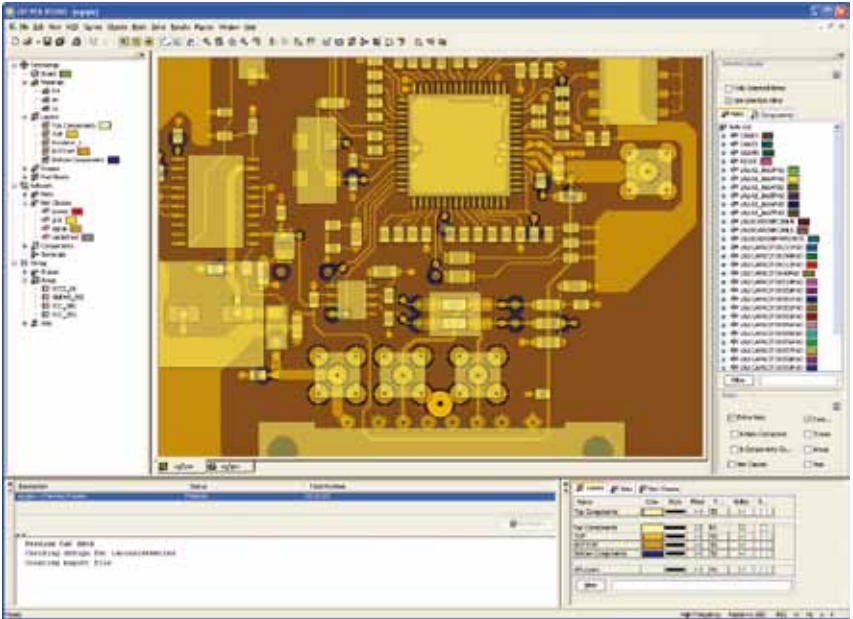


CST PCB STUDIO

SI/PI AND EMC/EMI SIMULATION OF PCBs

CST PCB STUDIO™ is a specialist tool for the investigation of Signal and Power Integrity and the simulation of EMC and EMI effects on PCBs. Regardless of the application type – high speed digital, analog/mixed signal, or power supply – CST PCB STUDIO (CST PCBS) will help you to get it right first time.



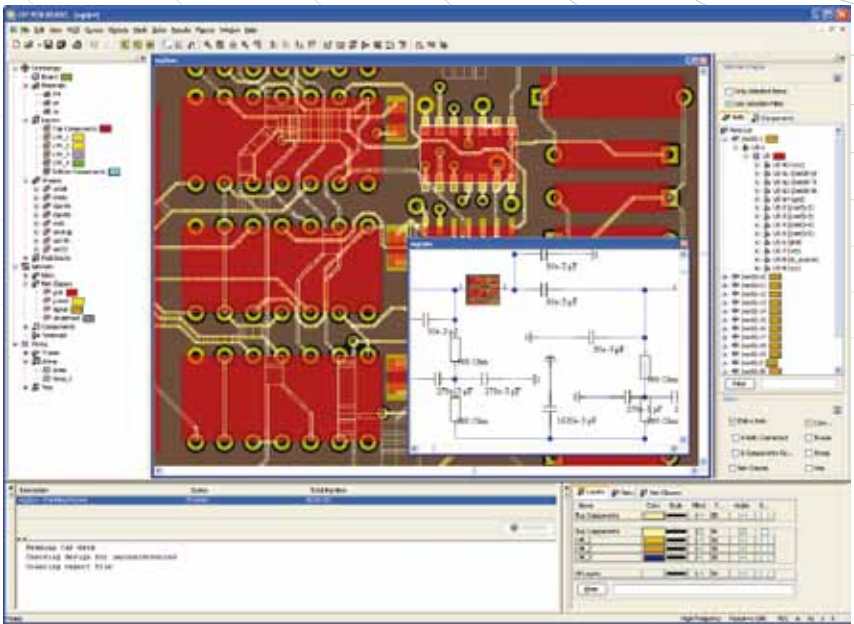
CST PCBS is fully integrated in the CST design environment so users can benefit from the manpower and experience invested in its world renowned user interface. A wide variety of imports allow the tight integration of CST PCBS with various design flows. For EMI analysis, results from CST PCBS can be used as the source for CST MICROWAVE STUDIO® (CST MWS) simulations.



CHANGING THE STANDARDS

SI/PI AND EMC/EMI SIMULATION OF PCBs

- Fully integrated in the CST design environment
- Push-button import of layout data
- SI and PI, EMC and EMI in time and frequency domain in 2D and 3D
- Skin effect and electric losses in time and frequency domain
- Interfaces with SPICE equivalent tools
- IBIS model import
- Interface with CST MWS for full 3D analysis (EMC/EMI)
- 2D BEM (Transmission Line) and 3D PEEC implementation
- System simulation with CST CABLE STUDIO™ and CST MWS models



IMPORTS

- Altium Protel 99SE
- Altium P-CAD®
- Cadence® SPECCTRA® (incl. Allegro®, OrCAD®)
- Mentor Graphics® Board Station®
- Mentor Graphics® Expedition™
- Mentor Graphics® PowerPCB® (PADS®)
- Zuken CR-5000
- Zuken VISULA